



Product Service

# CERTIFICATE

No. Z2B 16 01 15347 056

**Holder of Certificate:** **TORMAX**  
**Landert Motoren AG**

Unterweg 14  
8180 Bülach  
SWITZERLAND



**Certification Mark:**

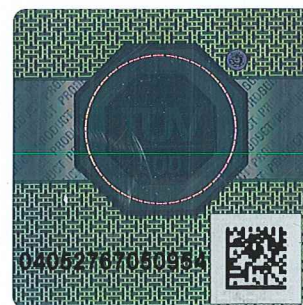


**Product:** **Automatic door drives**  
**TORMAX iMotion**

The product was tested on a voluntary basis and complies with the essential requirements. The certification mark shown above can be affixed on the product. It is not permitted to alter the certification mark in any way. In addition the certification holder must not transfer the certificate to third parties. See also notes overleaf.

**Test report no.:** 713062372

**Valid until:** 2021-01-25



**Date,** 2016-02-03

(Harry Griebel)

Page 1 of 2





Product Service

**CERTIFICATE**

No. Z2B 16 01 15347 056

**Model(s):** **TORMAX iMotion 2202.A Sliding Door Drive**  
**TORMAX iMotion 2302 Sliding Door Drive**

**Parameters:**

Models:	2202.A	2302
Rated voltage VAC:	115 V/230 V	115 V/230 V
Rated frequency:	50-60 Hz	50-60 Hz
Rated current:	2 A/1 A	2 A/1 A
Rated power max.:	190 W	190 W
Protection type:	I	I
Protection degree:	IP20	IP22
Max. door leaf mass:		
Linear 1 leaf:	1 x 130 kg	1 x 200 kg
Linear 2 leaves:	2 x 120 kg	2 x 180 kg
Telescopic 2 leaves:	2 x 80 kg	2 x 120 kg
Telescopic 2 leaves:	4 x 80 kg	4 x 100 kg
Temperature range:	-20°C - +50°C	-20°C - +50°C
Performance level:	d	d

**Coding**

1 Drive type	2: Sliding door drive
2 Durability	3: 1.000.000 cycles/4000 cycles/day
3 Leaf construction	2: Sliding door
4 Fire protection door	0: Not applicable
5 Safety devices	1: Force limitation 2: External safety devices, optional 3: Low-energy, optional
6 Special requirements	0: No special conditions
7 Safety at the door system (needs to be ensured upon installation)	Not applicable
8 Ambient temperature	4: Manufacturer inf. -20°C - +50°C

**Tested according to:**

EN 16005:2012  
 DIN 18650-1:2010  
 EN 60335-1:2012  
 EN 60335-2-103:2003/A11:2009  
 EN ISO 13849-1:2008

**Production Facility(ies):**

91848

Page 2 of 2

