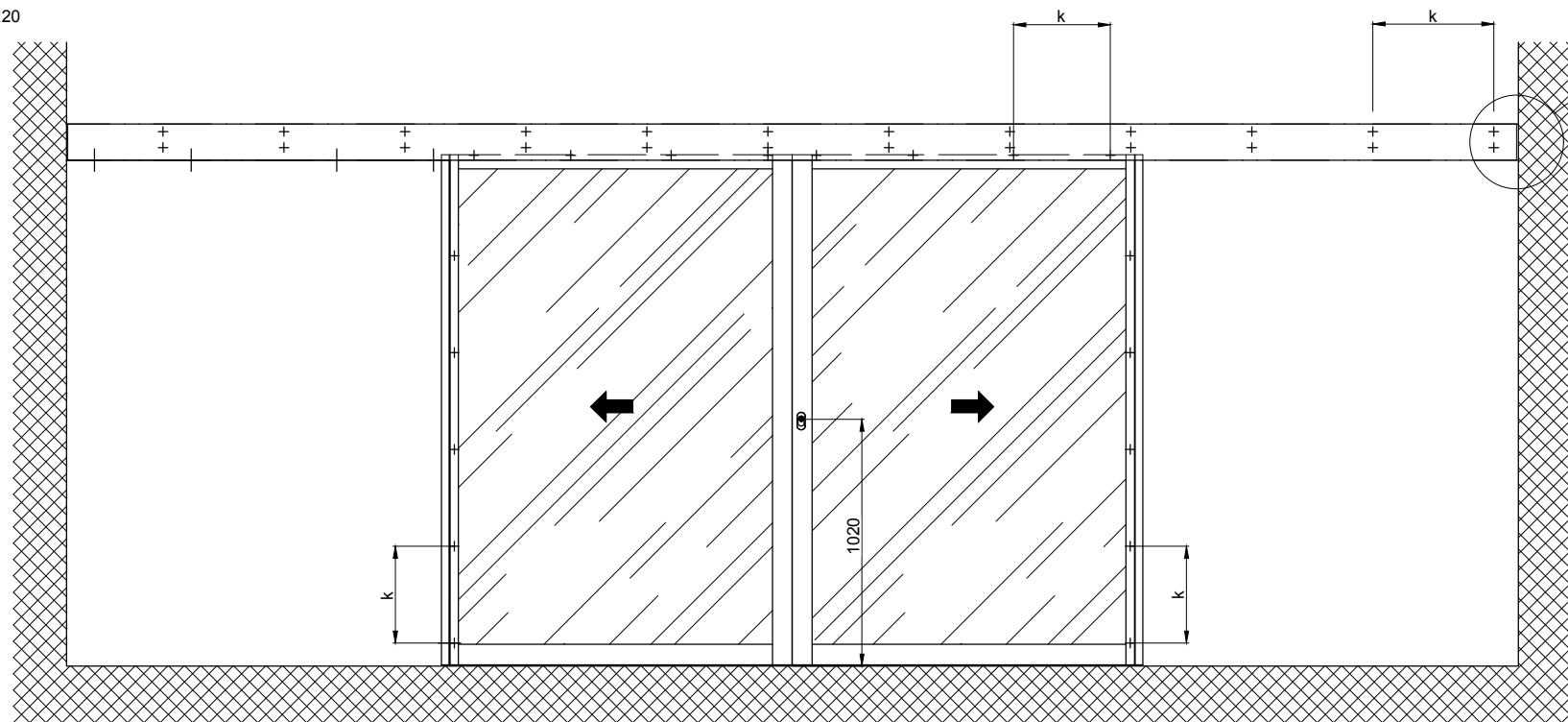
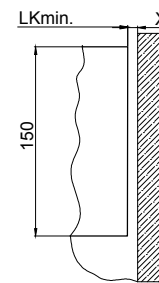


1:20

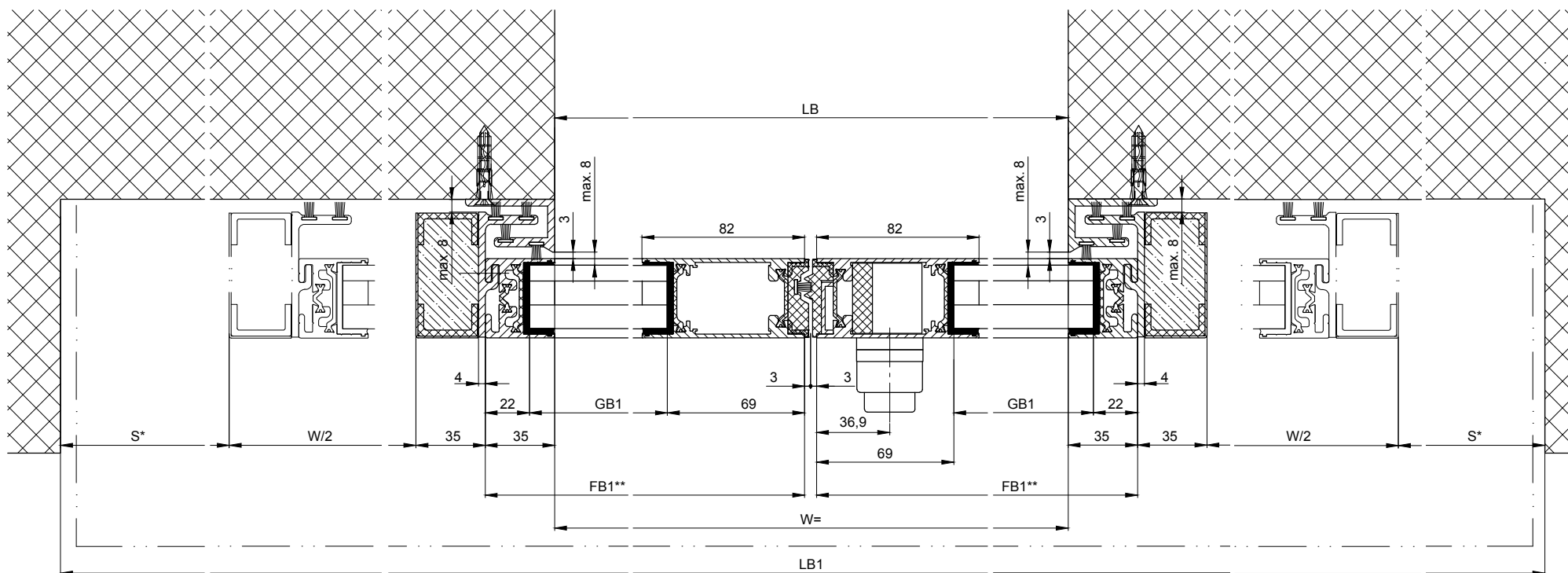
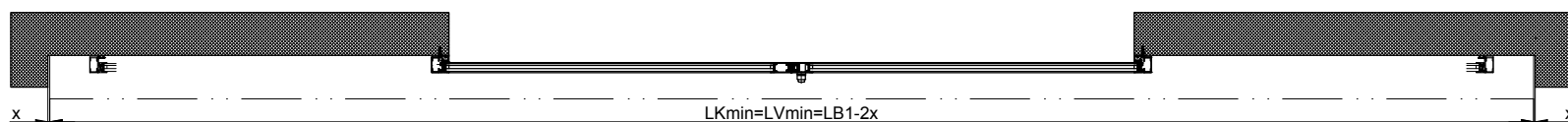
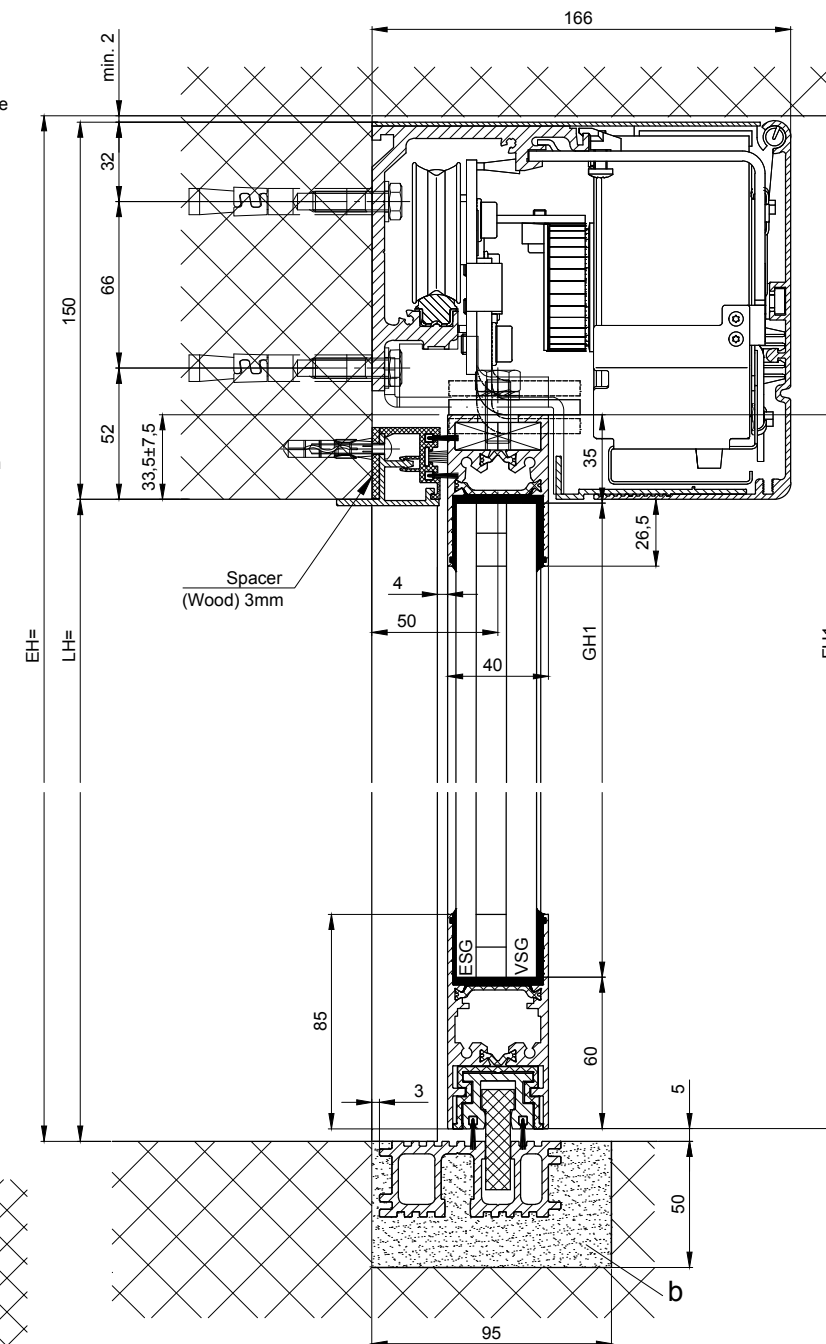


**Detail Y**

Wall clearance without side plate  $x = \text{min.} 8$



Note: Wall clearance with side plate  $x = \text{min.} 88$



b) Carried out by others  
k) Distance / type and number of screw connections are selected according to the building structure and strength required.

Variants see additional sheets

\* Safety distance according to national regulations

\*\* Light barriers according to national regulation

Anodize/color layer thickness: \_\_\_\_\_ Additional info: \_\_\_\_\_  
RAL \_\_\_\_\_

Object:

Customer:

Order-Nr.: \_\_\_\_\_ Date: \_\_\_\_\_ Release signatur: \_\_\_\_\_

LB1=2W+2S+140
W=(LB1-2S-140)/2
W=LB
LVmin=LB1-2x
LKmin=LVmin
FB1=W/2+32
GB1=FB1-91
FH1=LH+28.5
GH1=FH1-95

Scale	Drawn	16.11.18	REFL
%	ok to print		

Operator typ: Profilsystem Execution  
**iMotion 2302 LR32 THERM RC2 MPVF EB OF**

**TORMAX** AUTOMATIC  
TORMAX is a division and a registered trademark of Landert Group AG, CH-8180 Bülach-Zürich

Document number.: **T3\_390\_183** Index **D**

\*\* = without insulating attachment