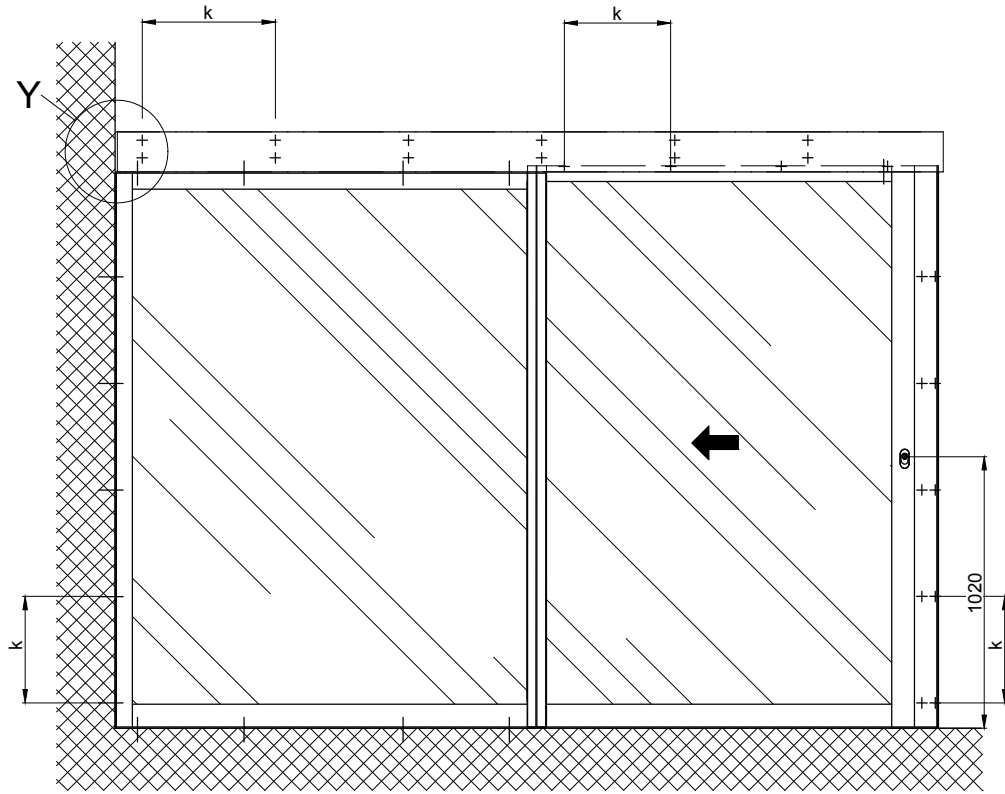
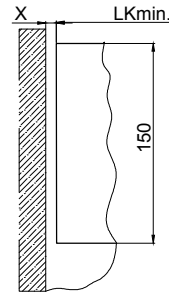


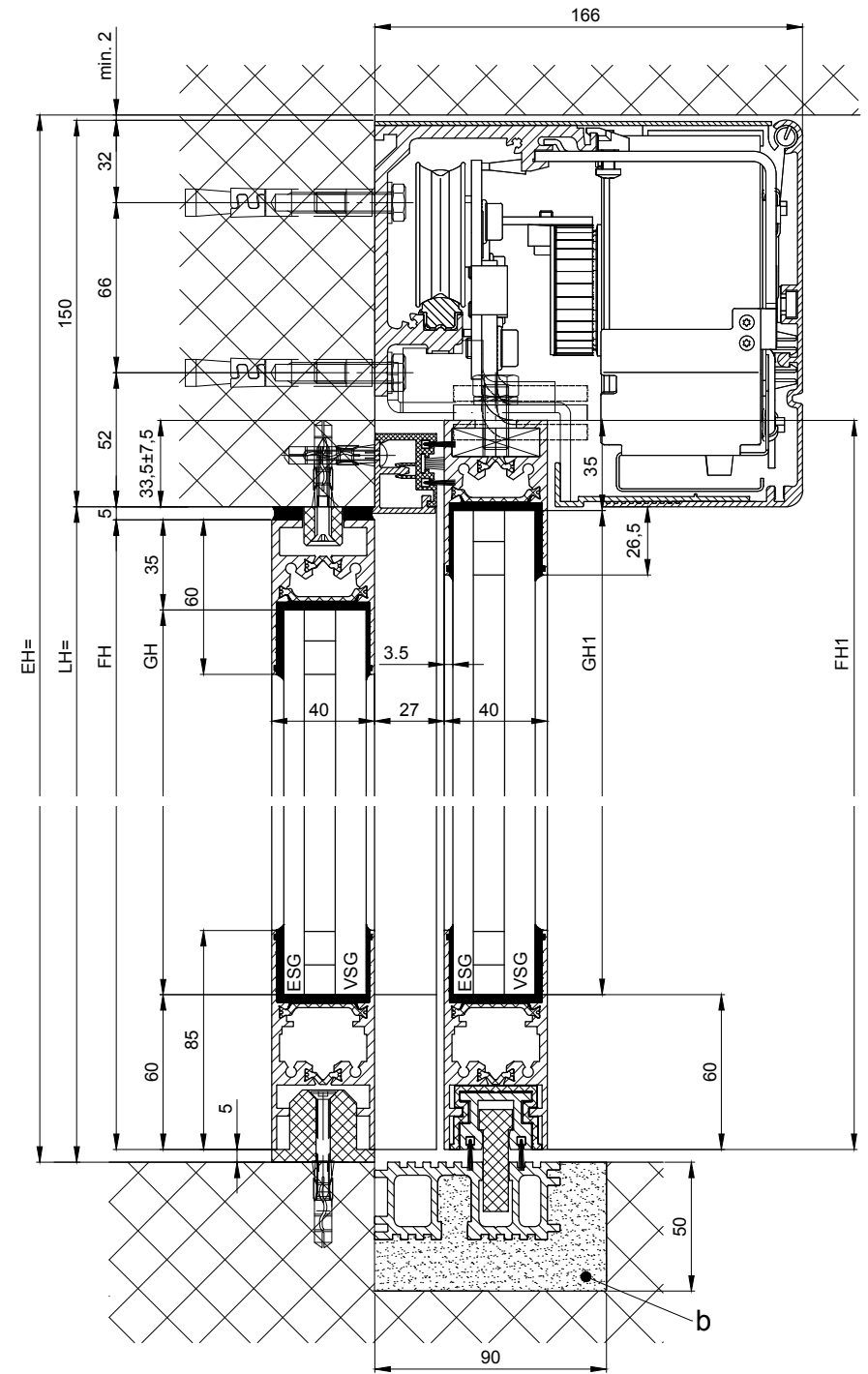
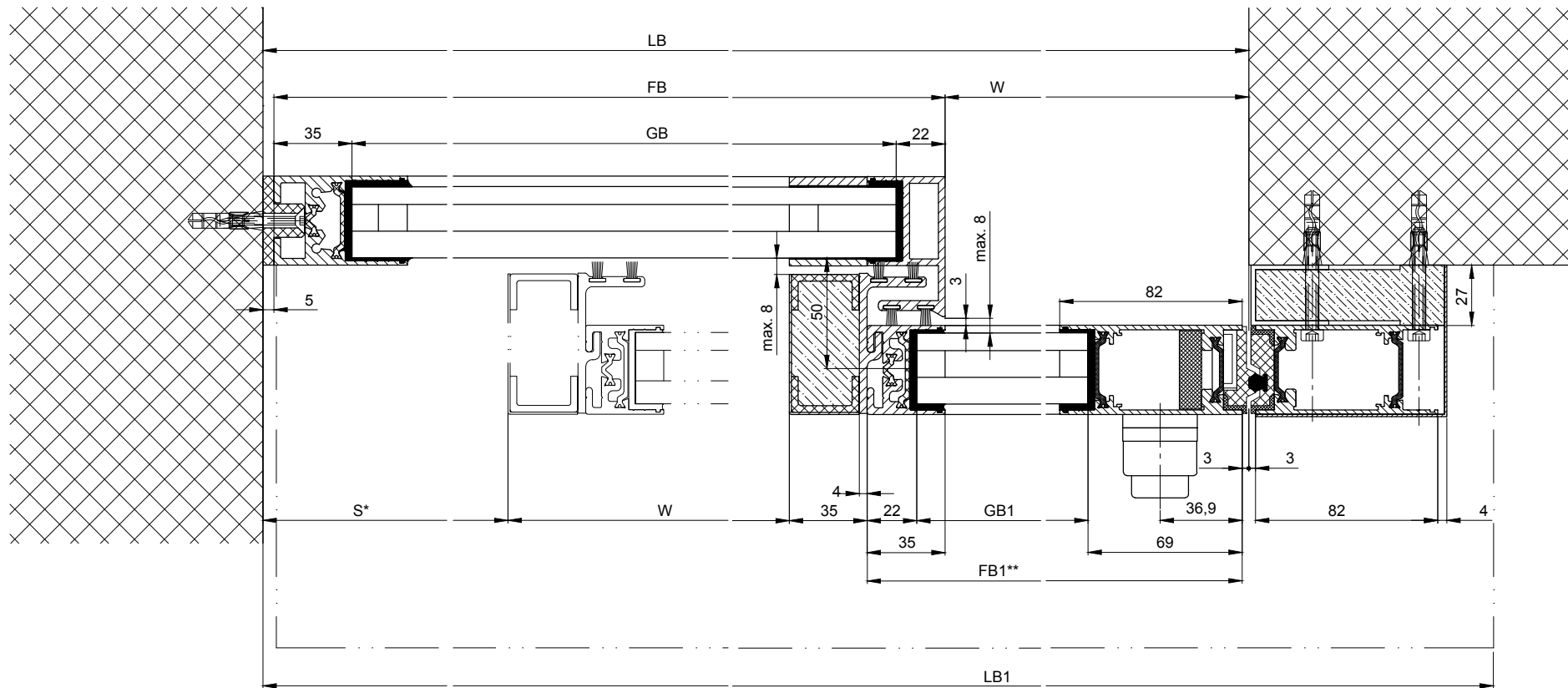
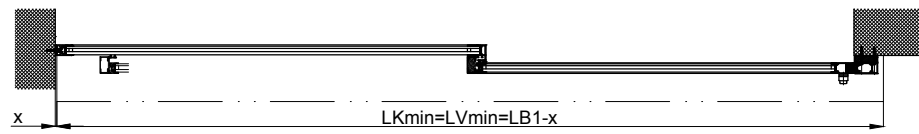
1:20



**Detail Y**  
Wall clearance without side plate  $x = \min. 8$



Note: Wall clearance with side plate  $x = \min. 80$



b) Carried out by others  
k) Distance / type and number of screw connections are selected according to the building structure and strength required.  
Variants see additional sheets

\* Safety distance according to national regulations

LB1=2W+S+180
LB=W+1
W=(LB1-S-180)/2
LVmin=LB1-28
LKmin=LVmin
FB1=W+32
FB=W+S+35
GB1=FB1-91
GB=FB1-55
FH1=LH+28.5
FH=LH-10
GH1=FH1-95
GH=FH-95

Anodize/color	layer thickness:	Additional info:
	RAL	
Object:		
Customer:		
Order-Nr.:	Date:	Releasesignatur:
Dimensional Drawing	Scale	Drawn
Operator: Profilsystem Execution	%	16.11.18
iMotion 2302 LR32THERM RC2 MPVF EL MF		
Document number:	REFL	Index
T3_390_181		D

\*\* = without insulating attachment



TORMAX is a division and a registered trademark of Landert Group AG, CH-8180 Bülach-Zürich