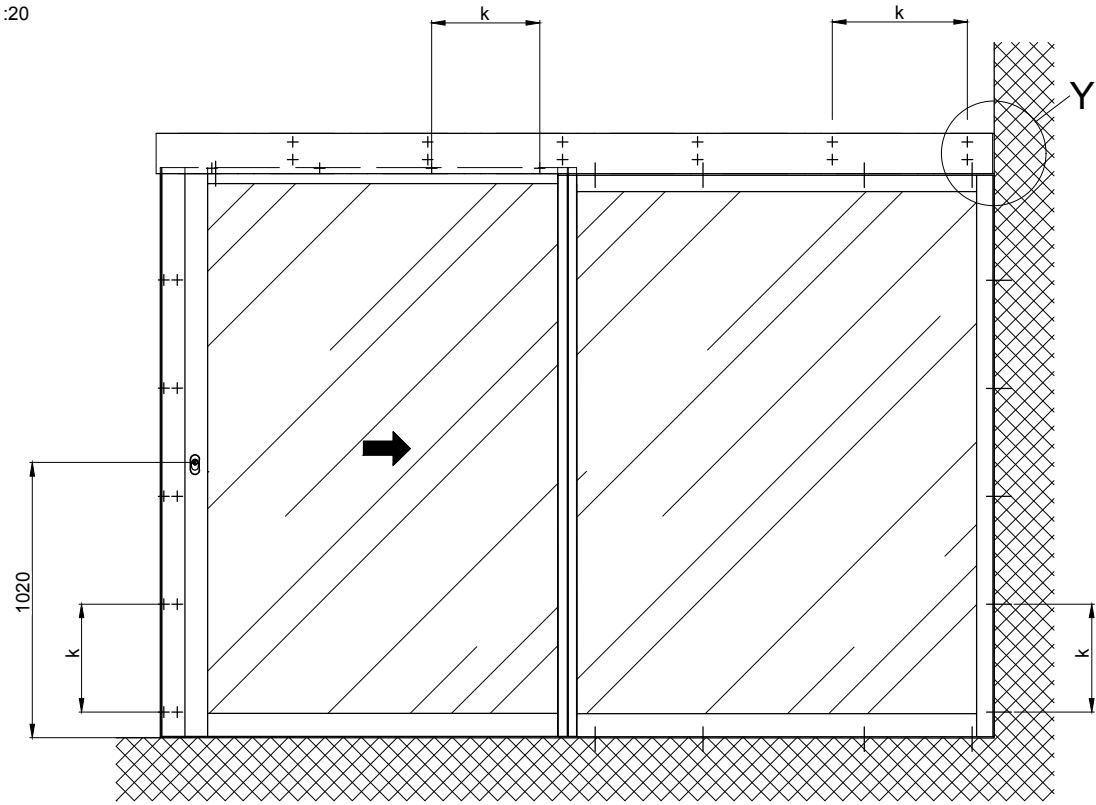
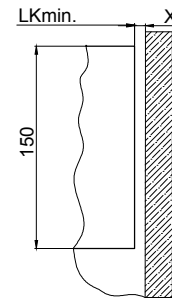


1:20

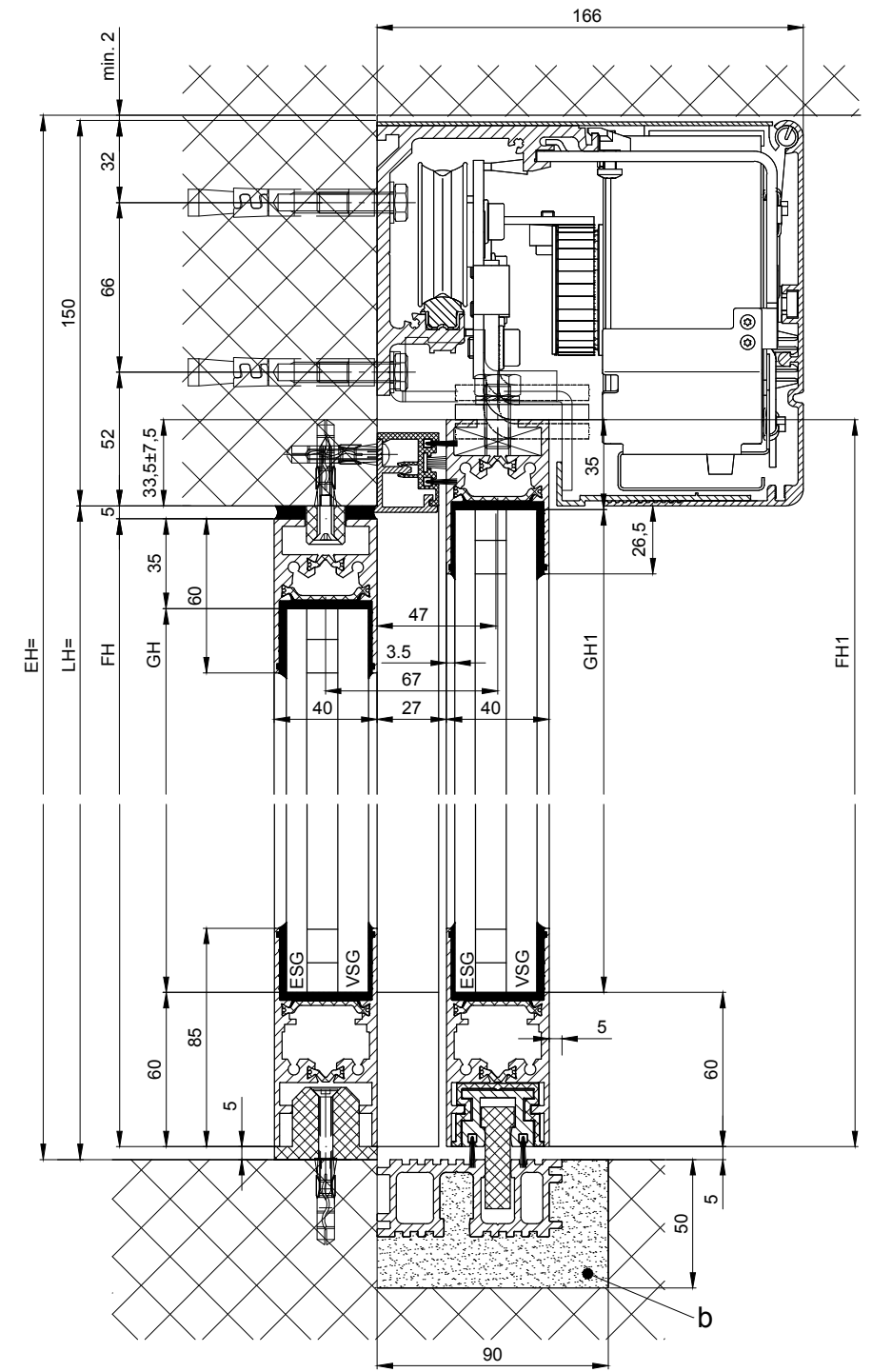
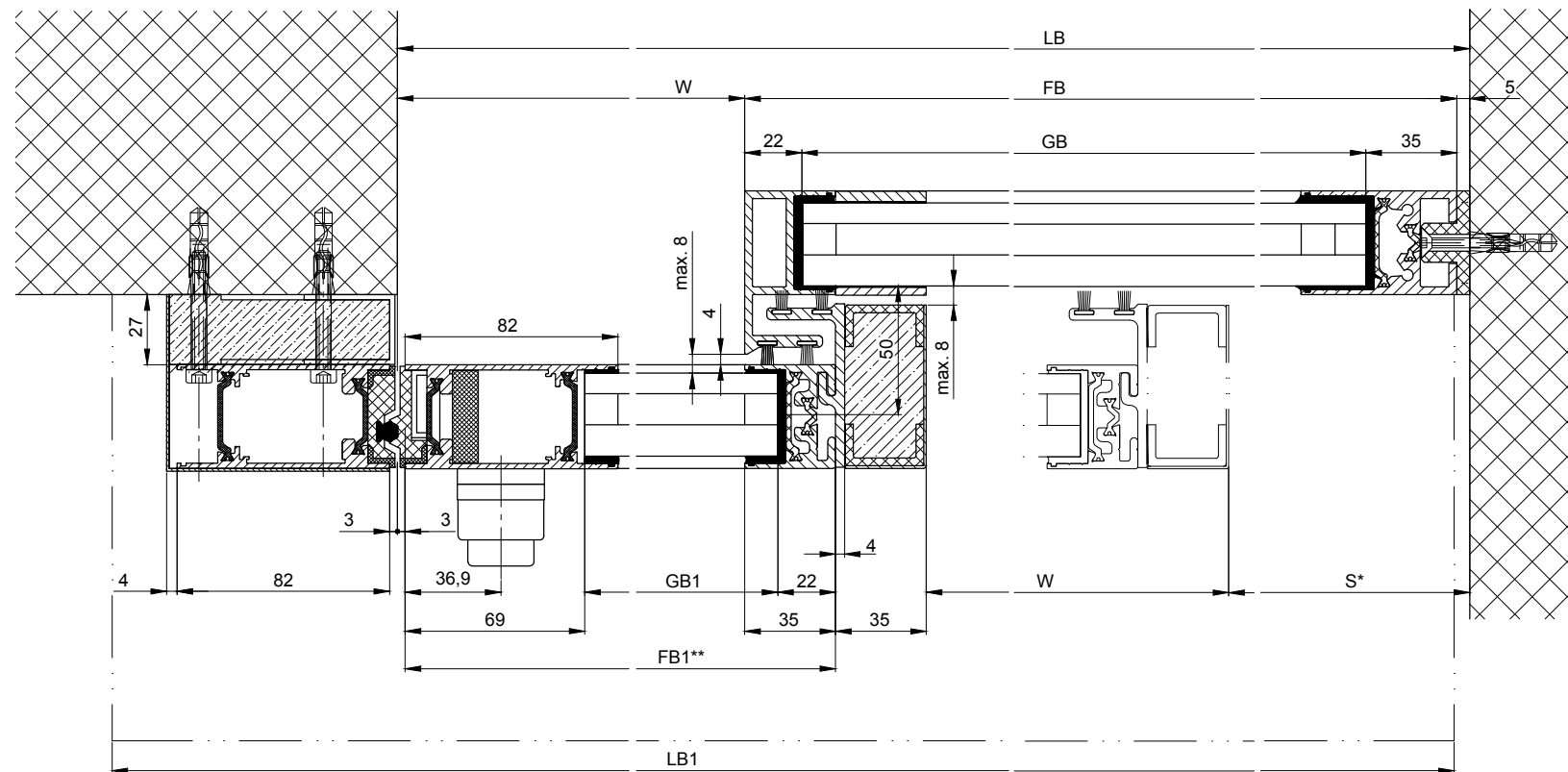
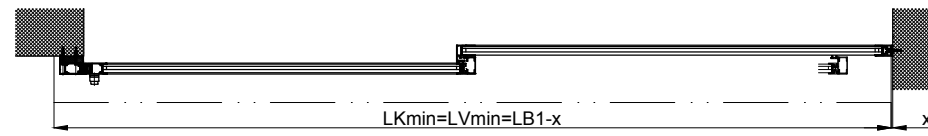


Detail Y

Wall clearance without side plate $x = \min. 8$



Note: Wall clearance with side plate $x = \min. 80$



b) Carried out by others
k) Distance / type and number of screw connections are selected according to the building structure and required strength.

Variants see additional sheets

* Safety distance according to national regulation

LB1=2W+S+180
LB=2W+42+S
W=(LB-42-S)/2
LVmin=LB1+x
LKmin=LVmin

FB1=W+32
FB=W+S+65

GB1=FB1-91
GB=FB-55

FH1=LH+28.5

FH=LH-10

GH1=FH1-95

GH=FH-95

Anodize/color: layer thickness: _____ Additional info: _____
RAL: _____

Object: _____

Customer: _____

Order-Nr.: _____ Date: _____ Release signatur: _____

Dimensional Drawing	Scale	Drawn	16.11.18	REFL
Operator typ: Profilsystem Execution	%	ok to print		

iMotion 2302 LR 32THERM RC2 MPVF ER MF

TORMAX TORMAX is a division and a registered trademark of Landert Group AG, CH-8180 Bülach-Zürich

Document number: T3_390_182 Index D

** = without insulating attachment