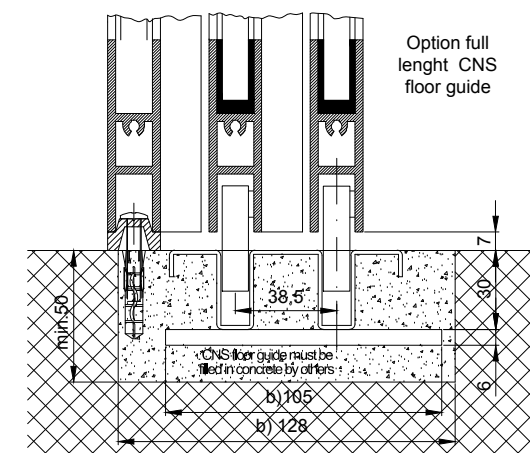
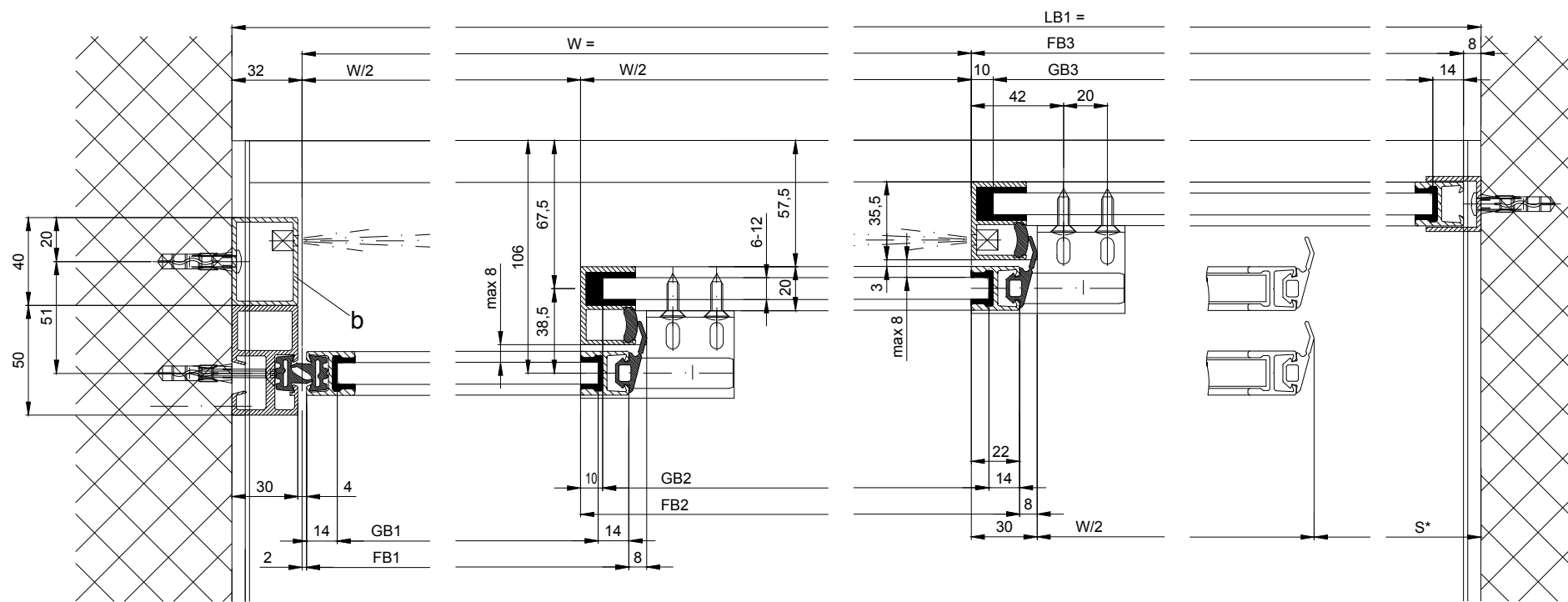
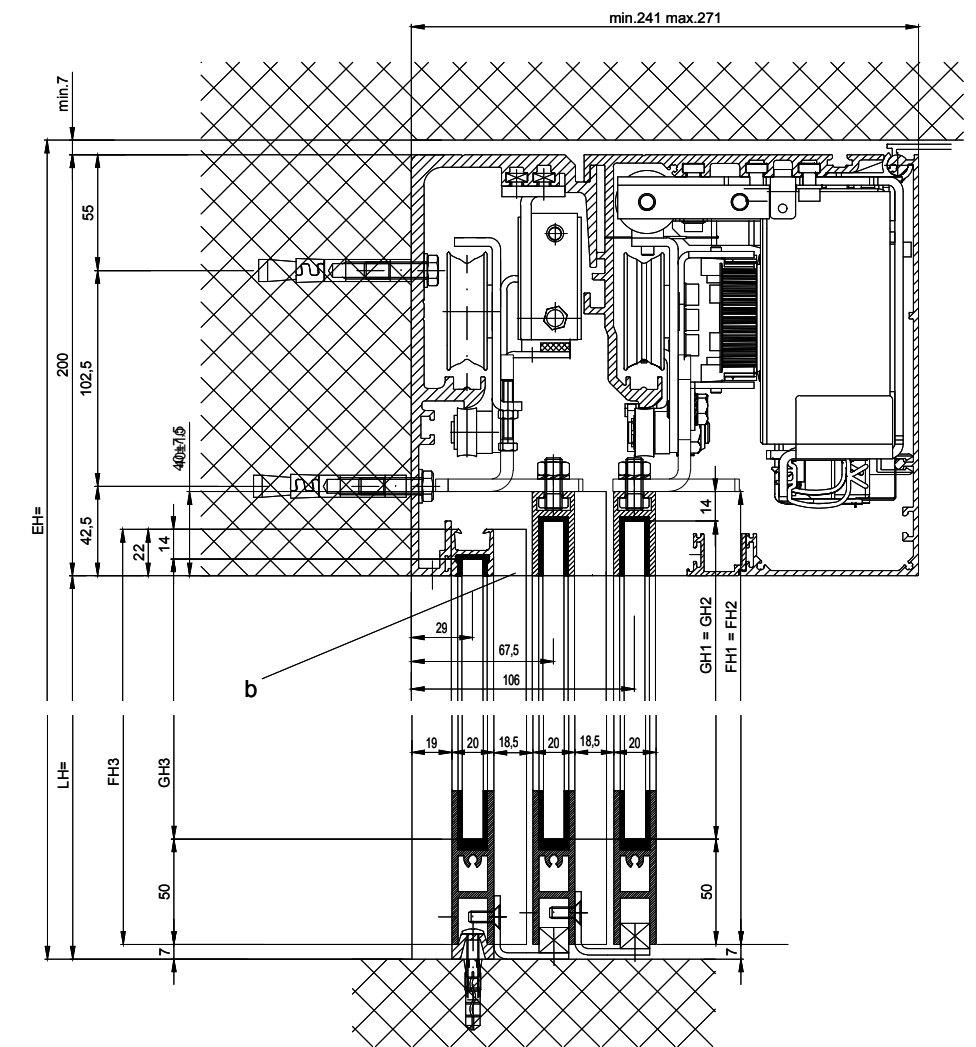
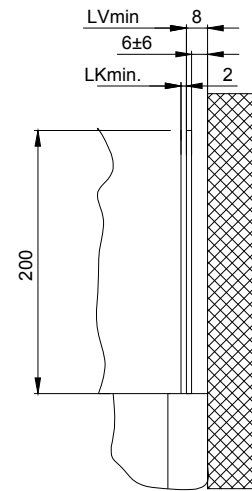


Detail Y



b) Supplied by employer

The door leaves must be made from material which do not bear any potential risk of injury in any case of breakage (for example single sheet toughened safety glass, compound safety glass etc.). Transparent door leaves must be clearly labelled to be recognised as such.

* Safety margin according to national regulation

** Light barriers according to national regulation

Anodize/color: layer thickness: Additional info:
RAL: :

Object:

Customer:

Order-Nr.:

Date:

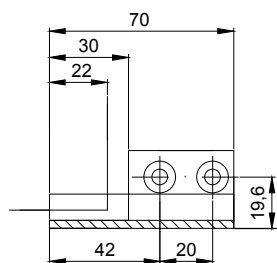
Releasesignatur:

Operator typ: Profilsystem Execution	Scale	Drawn	08.07.19	MURO
	%	ok to print		

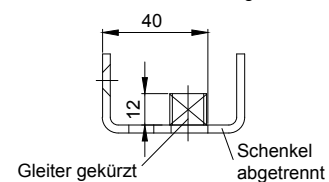
iMotion 2301-TR LR12 with fixedwing, lintel

TORMAX AUTOMATIC	TORMAX is a division and a registered trademark of Landert Motoren AG, CH-8180 Bülach-Zürich	Document number.: T3_390_611	Index: A
------------------	--	------------------------------	----------

Detail X



Nacharbeit: Seitliche Bodenführung



$LB1 = 1.5 \cdot W + S + 62$

$W = (LB1 - S - 62) / 1.5$

$LKmin = LB1 - 20$

$LVmin = LKmin + 2$

$FB1 = (W/2) + 20$

$FB2 = (W/2) + 22$

$FB3 = (W/2) + S + 22$

$FH1 = FH2 = LH + 33$

$FH3 = LH + 15$

$GH1 = GH2 = FH1 - 64$

$GH3 = FH3 - 64$

$GB1 = FB1 - 28$

$GB2 = FB2 - 24$

$GB3 = FB3 - 24$