



Product Service

CERTIFICATE

No. Z2B 16 01 15347 054

Holder of Certificate: **TORMAX**
Landert Motoren AG

Unterweg 14
8180 Bülach
SWITZERLAND



Certification Mark:

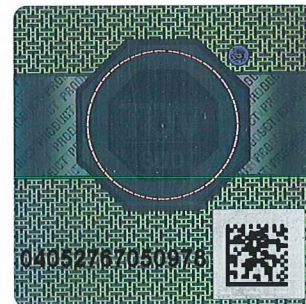


Product: **powered pedestrian doors**
TORMAX iMotion for Escape Routes

The product was tested on a voluntary basis and complies with the essential requirements. The certification mark shown above can be affixed on the product. It is not permitted to alter the certification mark in any way. In addition the certification holder must not transfer the certificate to third parties. See also notes overleaf.

Test report no.: 713062373

Valid until: 2021-01-25



Date, 2016-02-03

(Harry Griebel)

Page 1 of 2





Product Service

CERTIFICATE

No. Z2B 16 01 15347 054

Model(s): **TORMAX iMotion 2202.A-R Sliding Door**
TORMAX iMotion 2302.R Sliding Door
TORMAX iMotion 2302.R-HB Sliding Door

Parameters:

Models:	2202.A-R	2302.R(-HB)
Rated voltage VAC:	230 V	230 V
Rated frequency:	50-60 Hz	50-60 Hz
Rated current:	2 A/1 A	2 A/1 A
Rated power max.:	190 W	190 W
Protection type:	I	I
Protection degree:	IP20	IP22
Max. door leaf mass:		
Linear 1 leaf:	1 x 120 kg	1 x 150 kg
Linear 2 leaves:	2 x 100 kg	2 x 130 kg
Telescopic 2 leaves:	2 x 60 kg	2 x 120 kg
Telescopic 2 leaves:	4 x 60 kg	4 x 100 kg
Temperature range:	-10°C - +50°C	-10°C - +50°C
Performance level:	d	d

Coding

1 Kind of drive	2: Sliding door drive
2 Durability	3: 1.000.000 cycles/4000 cycles/day
3 Leaf construction	2: Sliding door
4 Fire protection door	0: Not tested
5 Safety devices	1: Force limitation 2: External safety devices, optional 3: Low-energy, optional
6 Special requirements	2: In escape routes without break out
7 Safety at the door system (needs to be ensured after build in)	2: With finger protection 4: With presence sensor
8 Ambient temperature	4: Manufacturer -10°C - +50°C

Tested according to:
 EN 16005:2012
 DIN 18650-2:2010
 EN 60335-1:2012
 EN 60335-2-103:2003/A11:2009
 EN ISO 13849-1:2008
 AutSchR:1997

Production Facility(ies): 91848, 91282, 93403

